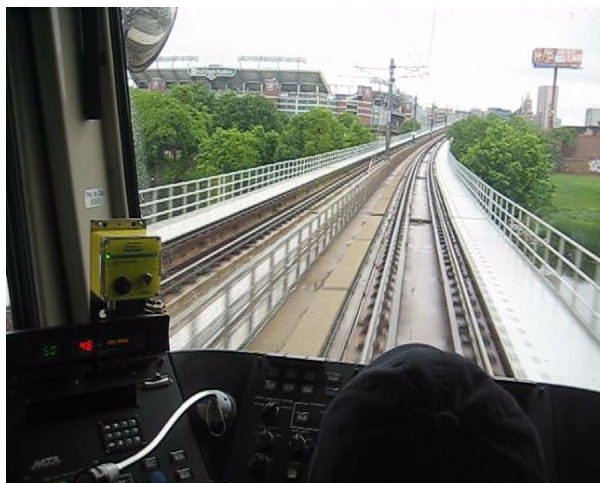


ProTracker™

Track Walker / Worker - Train Operator Advance Warning Devices

System 0071



TD mounted in an operators cab.

DESCRIPTION

The ProTran Technology ProTracker Train Device (TD) is designed to be mounted in the cab of a train. The train operator will be audibly and visually alerted of personnel near the train tracks who are wearing the ProTracker Personal Alert Device (PAD) and Safety Yellow Blue-Tooth. These devices enhance existing safety layering and agencies existing procedures.

The ProTracker Personal Alert Device (PAD) and the Portable Warning Lights/Horn (PWLH) communicate with the Train Device (TD). Once a train is detected both the PAD and PWLH will turn on giving warning to the work crew of an approaching train. It will also warn the train operator of the work crew up ahead. Also Ideal for advance warning for trespassers, first responders and fire, chemical or biological releases.

APPROVALS (TD) and (PAD)

United States (FCC)	OUR-XBEE
Canada (IC)	4214A-XBEE
Europe	RoHS/WEEE – upon request



APPLICATIONS

- Advance warning to train operator of walker or work crew ahead.
- Advance warning to walker or work crew of approaching train.
- Advance warning to trespassers of approaching train.
- Advance warning of fire, biological, chemical releases.
- Flagger device for advance warning of danger for work crew.
- Station train notification.

OPERATIONS

Refer to the ProTran Technology Operations Manual.

PRODUCT INFORMATION BULLETIN



Train Device (TD)
Placed in operators cab



Portable Warning Horn/Light (PWLH)
Placed in work zone



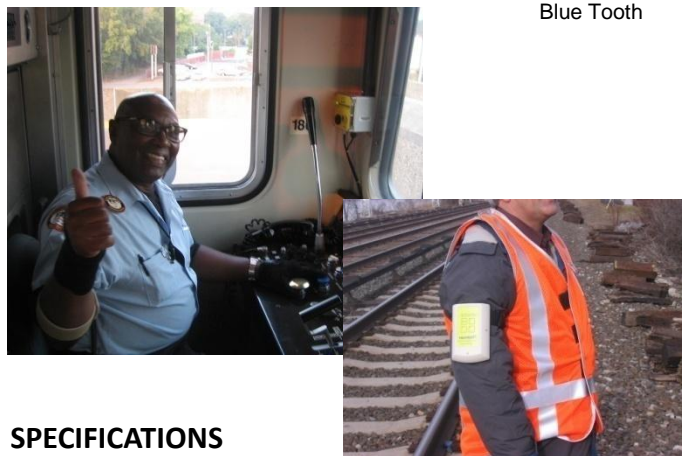
Personal Alert Device (PAD)
Worn by track personnel



Flagger Device (FD)
Wireless Flagger Alarm



Safety Yellow
Vibrating
Audible
Blue Tooth



SPECIFICATIONS

Train Device (TD) P/N 370-3100-Y

Note: Specifications shown are for all models sold after the printed document date at the end of each bulletin.

•Repeaters may be required for severe locations.

DC Input	25-70 VDC @ 390mA maximum
Fuse Protected	1 amp
Transceiver Frequency	Proprietary/Secure
Receiver Range*	Consult factory on range required
Enclosure	Polycarbonate / NEMA 4, 4x, 12 + 13
Operating Temp	-40C to +85C

ProTracker™
Track Walker / Worker - Train Operator
Early Alarm System

System 0071

SPECIFICATIONS CONTINUED

Keypad	Durable Sealed Membrane Keypad – Eliminates Dust, Dirt and Moisture Failures
Enclosure	ABS Plastic – with IP66 Option
Power Requirements	3.0 VDC
Battery Type and Life For PAD Charging battery standard	PAD/FD (4) 3V Lithium Ion each, size AA , to equal 3.0VDC nominal. p/n 03-2023 energizer only. 50 hours life service when new. When replacing batteries make sure they are a complete new set. Never change just individual batteries or move the old ones around.
Note: Current frequency settings are maintained in flash memory during battery replacement. No reprogramming of frequency setting is necessary!	
Battery Life for PWLH (Active Usage)	Up to 12-24 Hours (may vary based on number of activations per hour)
Battery Life (Off Mode)	Up to 1 year
Transmit Frequency	Proprietary/Secure
RF Output Power	Varies based on range
Transmit Range*	Consult factory on range required

Part Numbers for ordering

Item	Part Number
Train Device	370-3100-Y
Portable Warning Horn/Light	370-5100-Y
Personal Alert Device (PAD)	370-1105-Y
Flagger Device (FD)	370-1190
Blue Tooth (BT)	370-2100

DIMENSIONS

Train Device (TD)

Mounted in the operators cab



4" x 4" x 2.5" / 10.16cm x 10.16cm x 6.35cm
 Weight 2lbs (.907kg)

Blue Tooth, Personal Armband Device (PAD) and (FD)
 Worn on the workers Arm or hand held

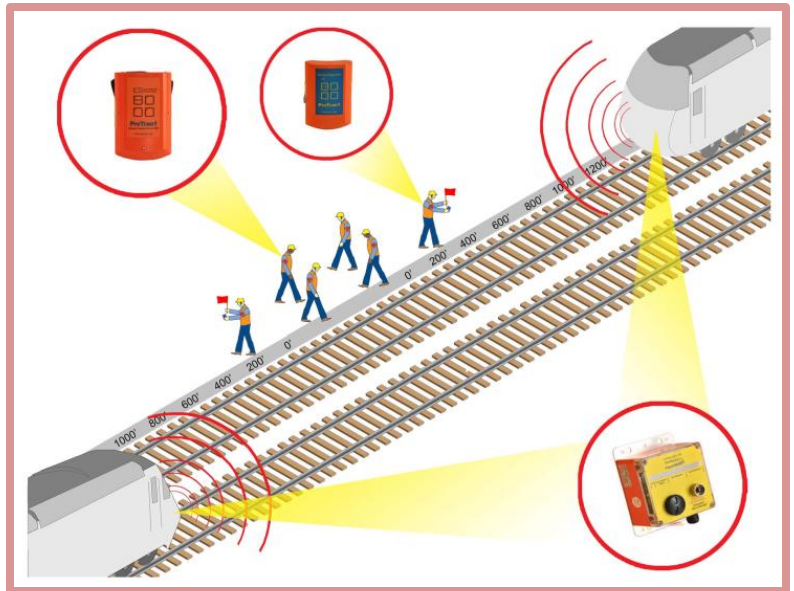


Blue Tooth - 2"x1" 5.00cm x 2.5cm
 PAD and FD - 4" x 6" x 1.5" / 10.16cm x 15.24cm x 3.81cm
 Weight 1lbs (.45kg)

Portable Warning Light/Horn (PWLH)
 Placed in work zone



14" x 6" x 8" / 35.56cm x 15.24cm x 20.32cm
 Weight 7lbs (3.17kg)



ProTran Technology

DOCUMENT DATE 14-Mar-2012

P.O. Box 659, Flanders, NJ 07836
 Phone 609-704-1737 Fax 609-704-0565
protran@protrantechnology.com
www.protrantechnology.com

LIMITED WARRANTY STATEMENT

ProTran warrants its products, if properly used and installed, will be free from defects in material and workmanship for a period of 1 year after date of purchase. Said warranty to include **ONLY** the repair or replacement of defective equipment. This warranty does not cover damage due to external causes, including accident, problems with electrical power, and usage not in accordance with product instructions, misuse, neglect, alteration, repair, improper installation, or improper testing. This limited warranty, and any implied warranties that may exist under state law, apply only to the original purchaser of the equipment, and last only for as long as such purchaser continues to own and properly maintain the equipment.

This warranty replaces all other warranties, express or implied including, but not limited to, the implied warranties or merchantability and fitness for a particular purpose. ProTran Technology makes no express warranties beyond those stated here. ProTran Technology disclaims without limitation, implied warranties of merchantability and fitness for a particular purpose. Some jurisdictions do not allow the exclusion of implied warranties so this limitation may not apply to you.

To obtain warranty service, contact ProTran Technology for a return material authorization. When returning equipment to ProTran Technology, the customer assumes the risk of damage or loss during shipping and is responsible for the shipping costs incurred.

Legislation requires that all protective equipment be tested at least once a year for compliance with ProTran Technology specifications and to industry standards. Ensuring your safety equipment meets or exceeds the highest standards reduces the costs of lost-time accidents.

ProTran recommends all ProTran Technology products to be maintained under ProTran Technology's "Service and Support Contract Agreement" Please contact ProTran Technology for a proposal.