

ProTran Technology

Leading Manufacturer of "Risk Reduction Technology"™

ProFlagger Flagger / Work Zone Warning Alarm

MODEL# 0080



Wireless Advance Warning Devices
Work Crew, Train Operator, Track Vehicle

PRODUCT INFORMATION BULLETIN



Flagger Device
Wireless flagger alarm



Portable Warning Horn/Light
Placed near work crew

DESCRIPTION

The ProTran ProFlagger allows the flagger or advance watchman to use a handheld device and warn a worksite of an approaching train or danger. The system also sends a confirmation signal back to the flagger or advanced watchman. The system is used as a secondary warning to add layering of safety to existing agencies procedures and replace the blow horn.

The ProFlagger is light weight, user friendly, and takes only seconds to set up. The Personal Alert Device, Blue Tooth and Portable Warning Horn/Light communicates with the Flagger Device. Once the flagger sees a train he pushes his flagger device button and a secured alarm is sent to the workers that a train is approaching giving the work crew time to clear the tracks. A confirmation signal is sent back to the flagger that indicates the work zone has received the signal.

SPECIFICATIONS

Flagger Device (FD) P/N 0080FD

Note: Specifications shown are for all models sold after the printed document date at the end of each bulletin.

- Repeaters may be required for severe locations.
- PWLH battery life 3 months active 1 year non active. PAD/FD (4) 3V Lithium Ion each, size AA, to equal 3.0VDC nominal. p/n 03-2023 energizer only. 50 hours life service when new. PAD/FD Battery must be changed when red LED low battery shown. When replacing batteries make sure they are a complete new set. Never change just individual batteries or move the old ones around.

APPROVALS OR TESTED TO:

United States (FCC)	OUR-XBEE
Canada (IC)	4214A-XBEE
Europe (CE)	ETSI
Europe	RoHS/WEEE – upon request

DC Input**	Re-Chargeable Battery Powered
Fuse Protected	Yes
Transceiver Frequency	Proprietary/Secure
Tx/Rx Range*	Based on agencies requirements
Enclosure	Polycarbonate / IP6, NEMA 4, 4x
Operating Temp	-40C to +85C



APPLICATIONS

- Advance warning to work crew of approaching train.
- Advance warning for hi-rail operator of workers ahead.
- Advance warning of danger for work crew.

OPERATIONS

Refer to the ProTran Operations Manual.

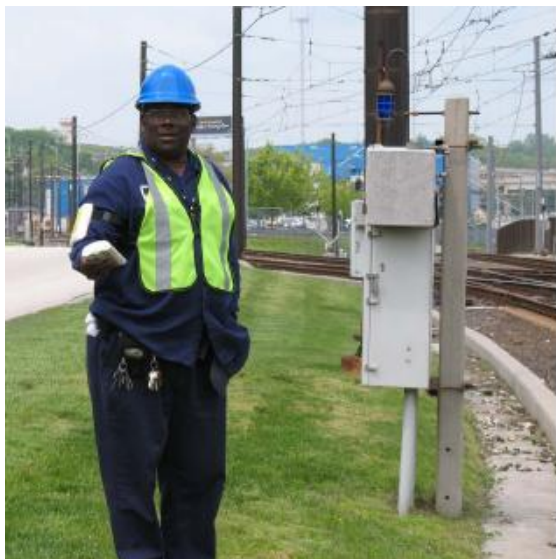
101601-80 kit(s) comes with the following:

QTY	Item	Part Number
2	Portable Warning Horn/Light	0075PWLH
2	Personal Alert Device (PAD)	0075 PAD
1	Flagger Device (FD)	0080 FD

Note: Blue Tooth and additional items per kit can be added.

**ProFlagger
Flagger / Work Zone Warning Alarm**

MODEL# 0080



DIMENSIONS

Blue Tooth, Personal Armband Device (PAD) and (FD)
Worn on the workers Arm or hand held



Safety Yellow
Vibrating
Audible
Blue Tooth



Blue Tooth - 2"x1" 5.00cm x 2.5cm
PAD and FD - 4" x 6" x 1.5" / 10.16cm x 15.24cm x 3.81cm
Weight 1lbs (.45kg)

Portable Warning Light/Horn (PWLH)
Placed in work zone



14" x 6" x 8" / 35.56cm x 15.24cm x 20.32cm
Weight 7lbs (3.17kg)

ProTran Technology

DOCUMENT DATE 08-FEB-12

P.O. Box 659, Flanders, NJ 07836
Phone 609-704-1737 Fax 609-704-0565
protran@protrantechology.com
www.protrantechology.com